

Sego™

Fully Automatic Espresso Brewer
by Bravilor Bonamat



Why Bean-to-Cup Brewers?

The future of bean-to-cup is here.

With 70+ years of coffee equipment manufacturing experience, the family owned Bravilor Bonamat continuously raises the bar for manufacturing excellence of equipment at affordable prices. Our Bean-to-cup equipment serves the most discerning customers in the office and hospitality space with freshly ground and brewed coffee and genuine espresso, and are a must-have in an operators portfolio. Bean-to-cup machines compete with the coffee-house experience and craft the freshest bean extractions and a richer beverage experience.

Why is the SEGO™ creating espresso based drinks?

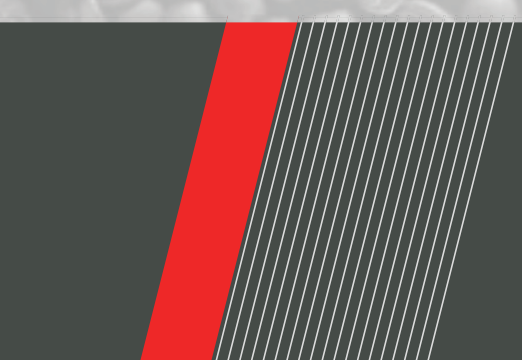
- They are key to bringing the full cafe experience into workplace and hospitality locations.
- Bean-to-cup brewers create the freshest bean extraction and richer coffee and espressos, and a wide variety of speciality beverages.
- Espresso based beverages are trending with a 50% boost in consumption, thanks to young adults - nearly 30% of drinkers under age 40 prefer espresso.
- The high quality milk powders and premium chocolates of today are best coupled with a shot of genuine espresso.
- Specialty coffee drinkers are slightly heavier coffee drinkers compared to traditional coffee drinkers, with 2.8 & 2.6 average number of cups consumed per day, respectively.

Bravilor Bonamat's Innovative and Exclusive Solutions.

- Patented brewers, brew systems and parts that dramatically improve brewer performance and reduce maintenance and cleaning for back-to-back brewing.
- Our patented Valve-less Brewing System (V.B.S.) is designed to minimize failures reducing service calls for defective valves.
- Shared parts across all bean-to-cup equipment lowers inventory costs.

We have the right equipment portfolio for your beverage needs.

Bravilor's focus in the bean-to-cup category, with our current line-up and future product releases, is all about widening the opportunities for bean-to-cup equipment placement. All of our equipment features self-serve, touch screen operation, a low service rate, and a user-friendly interface; creating a great experience for everyone.



Sego™

Fully Automatic Espresso Brewer
by Bravilor Bonamat

Sego™ Bean-to-Cup Brewer

Bring this elevated experience directly into the workspace. Creates exceptional quality, cafe-style beverages.

Unique to Bravilor Bonamat, the Sego™ is a versatile super-efficient bean-to-cup brewer with 30 drink options in a small, yet mighty machine.

Our patented CIRCO™ brewer delivers espresso based beverages at 9 Bar pressure, similar to high-end and premium priced espresso equipment, but at a fraction of the cost.



Sego™

Fully Automatic Espresso Brewer
by Bravor Bonamat

SEGO™ 12 Highlights and Features

Sized just right!

Accounts with a 74 persons or less users represent nearly 60% of locations served by OCS operators.

This offers an enormous potential for smaller and more cost effective equipment like the SEGO™.

At just 23" high, and value priced, the SEGO™ bridges the gap between cup, pod, single cup solutions and larger bean-to-cup brewers. It offers tremendous versatility and a true bean-to-cup experience.

- Grinds up to 16 grams of coffee per brew, delivering a great espresso every time.
- ADA compliant: placed on a maximum countertop height of 34"
- The SEGO™ 12 is a recent winner of the "Readers' Choice New Product of the Year Award", *Automatic Merchandiser*.
- 6 oz. to 10 oz. cup clearance.

**SEGO™
23.23" Height**

**CUP CLEARANCE
Holds 10 oz. cups
4.13" Height**



Available beverage options

A full range of espresso based beverages from traditional to specialty flavors.

- Coffee Crema
- Espresso
- Double Espresso
- Americano
- Latte
- Cappuccino
- Cafe Mocha
- Moccachino
- Latte Macchiato
- Hot Chocolate
- Hot Chocolate Deluxe
- Hot Water
- Hot Milk Shot/Steamer



Coffee Crema
freshly brewed



Espresso &
Double Espresso



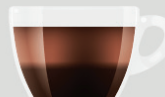
Americano
double espresso
with water



Latte
espresso with
steamed milk



Cappuccino
espresso with milk foam



Cafe Mocha
espresso with hot
chocolate



Moccachino
espresso with
hot chocolate & milk foam



Latte Macchiato
espresso with
steamed &
foamed milk



Hot Chocolate



Hot Chocolate Deluxe
with steamed milk



Hot Water



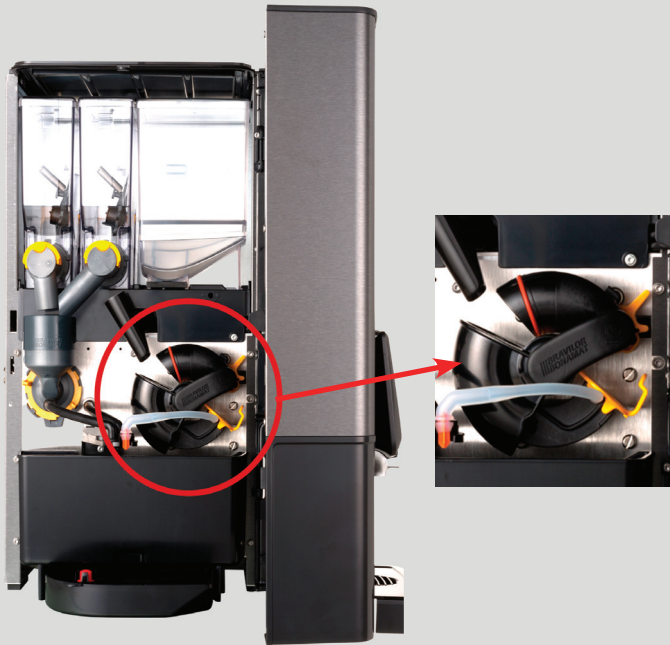
Hot Milk Shot/Steamer

Sego™

Fully Automatic Espresso Brewer
by Bravilor Bonamat

SEGO™ 12 Highlights and Features

Easy to program, operate and clean so you can keep coffee flowing all day, every day.

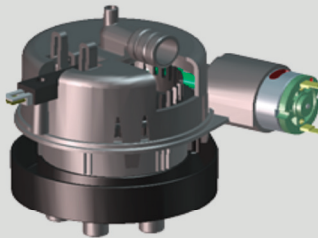


Patented CIRCO™ Brewer

Holds up to 16 grams of coffee per brew and is the most service friendly brew group in the market. Delivers traditional espresso based beverages at 9 Bar pressure, similar to high-end & premium priced espresso equipment, but at more affordable pricing.

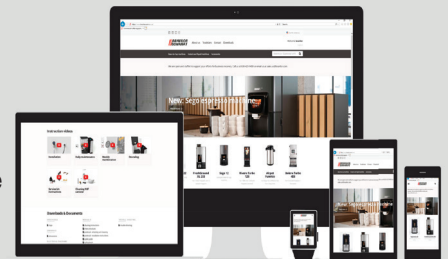
Patented Water System

Designed to minimize common failures, reducing service calls for defective valves and on-site descaling, so you can avoid costly downtime.



Service Friendly Features

Helpful instructions and guides are built into every SEGO™. Additional support information is available online in every format.



N.S.F. Certified Soluble Canisters

Easy to disassemble by hand, clean and re-assemble. Breakdown for 100% dry and wet cleaning. All plastic is BPA free and Teflon™ infused to reduce clogging.



No Coffee Packaging Waste

The SEGO™ uses no filter paper or any other single use by-products other than coffee. No more wasteful, non-reusable, non-recyclable plastic or aluminum cups or packaging.



Sego™

Fully Automatic Espresso Brewer
by Bravilor Bonamat

SEGO™ 12 with Riser Set



The Riser Set

Takes just minutes to install and retro-fits with all SEGO'S.

- 4 pc. set: waste bin, drip tray, cup grid and pedestal.
- Widens the application options of the SEGO™ 12.
- Increases waste capacity to 40 coffee pucks.
- Increases cup clearance to fit 12 oz. cups.
- Can be modified to pass-through waste.
- Can connect to a drainage with the optional drainage kit.
- 6 oz. to 12 oz. cup clearance.

Riser Set sold separately.

**OVERALL
HEIGHT**
25.59"



SEGO™ 12 WITH RISER SET
(left; shown open. right; shown side view.)



Contactless Coffee Control (CCC) App Kit

Swift and simple-to-use intuitive app for touchless ordering. Enables customers to use their smart phone to select their beverage. It's easy to install and doesn't require a modem or internet connection. Using Near Field Communication Technology (NFC), there is no subscription or data cost. CCC App Kit sold separately. Download App at:



Technical Specifications and Descriptions

Description

- User-friendly, touch screen operation.
- Bean-to-cup espresso and specialty beverage machine.
- Small counter footprint: 23.23" high.
- Up to 30 beverage options.
- Three cup sizes from 6 oz. to 10 oz. With Riser Set: holds up to 12 oz. cup.
- One coffee bean hopper. Two soluble canisters.
- Patented CIRCO™ Brewer is compact, easily accessible and cleaned in seconds.
- Grinds up to 16 grams of coffee per brew, delivering a great espresso every time.
- ADA compliant: placed on a maximum countertop height of 34".
- Custom screensavers, backgrounds & beverage images.

Accessories and Options

- Riser Set: expand waste capacity and cup clearance.
- MDB Interface: for payment systems.
- Contactless Coffee Control (CCC) APP Kit: touch-less ordering app.
- Drainage Kit: connect drip tray to a drainage outlet (with riser set only).



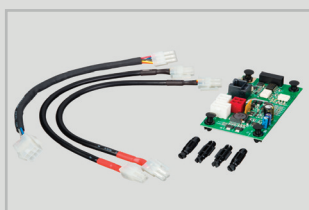
Riser Set



Contactless Coffee Control (CCC) App Kit



Drainage Kit



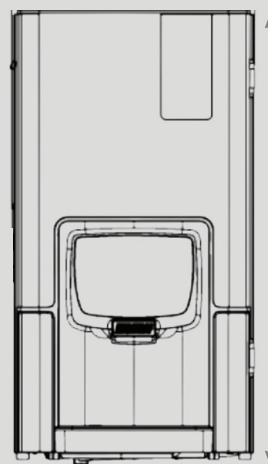
MDB Interface

Specifications

Volts/Amps/Watts	120 V/15 amps/1440 W
Water Connector	3/4" male, filtered water (recommended)
Water Pressure	14.5 PSI (1 bar) min.
Average Dispense Time	25 sec/shot
Cup Clearance	4.17"/106 mm
Cup Clearance with Riser Set	5.31" /135 mm
Cup Sizes	Up to 10 oz. With riser: up to 12 oz.
Bean Hopper	1 x 3 lbs./1 x 1.2 KG
Soluble Canisters	2 x 1.5-2 lbs./2 x 1.3 liters
Hot Water Tank Volume	0.81 gallons/3.1 liters
Weight	NET: 55.1 lbs./25 KG SHIP: 60.6 lbs./27.5 KG
Certifications	NSF/ANSI 372 (item # SEGO1-010). C-UL (CA & USA)

Dimensions

Brewer Dimensions	23.23" H x 12.40" W x 17.72" D 590 H x 315 W x 450 D mm
Dimensions with lid open for refilling	35.83" H x 12.40" W x 17.72" D 910 H x 315 W x 450 D mm
Dimensions with Riser Set	25.59" H x 12.40" W x 17.72" D 650 H x 315 W x 450 D mm

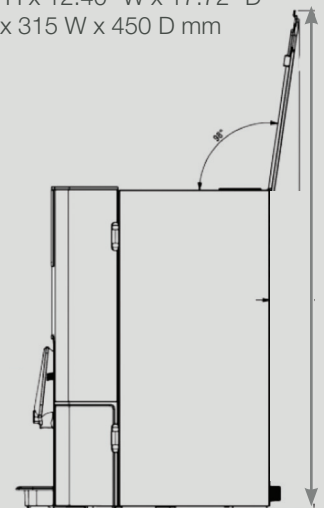


FRONT:

23.23" H x 12.40" W x 17.72" D
590 H x 315 W x 450 D mm

LID OPEN:

35.83" H x 12.40" W x 17.72" D
910 H x 315 W x 450 D mm



Certified to
NSF/ANSI 372





Manufactured and distributed by:

Bravilor Bonamat, LLC
1204 Bilter Road | Aurora, IL | 60502 | USA
PH 630-423-9400
FAX 630-423-9405
E sales.us@bravilor.com
W www.bravilor.com/en-us

Alterations allowed US.22.V3

**/// BRAVILOR
BONAMAT**

The taste of quality worldwide

Presented to you by:

